

## Interim Arrangements: APEL and mapping onto the PG Dip GPP

### Contents

1	Admission to Postgraduate Diploma in General Pharmacy Practice .....	2
2	Pre-considerations for mapping .....	4
3	APEL mapping process, PG Dip GPP .....	5
4	FAQs:.....	6
5	Further information.....	7

# 1 Admission to Postgraduate Diploma in General Pharmacy Practice (PG Dip GPP)

The JPB has previously received a significant number of enquires from senior pharmacists (either early implementers of the PG Dip GPP programme or from those currently applying for accreditation) relating to how best to support junior pharmacists who have already completed a series of rotations and who hold the School of Pharmacy Certificate qualification. Such pharmacists appear to be caught between the two systems i.e. they have moved beyond entry into the new system and the existing postgraduate provision is either unsuitable or they are unable to access it.

To respond to the needs of these individuals the following special measures have been agreed, as an interim measure to smooth the transition from one system to another and has been in place to allow entry since December 2007. Thereafter entry will be considered for June and December.

These measures are to meet the needs of post "Certificate" pharmacists and will be rigorously applied in line with Quality Assurance Agency standards. The key elements are:

1. Candidates can request that their experiential learning is reviewed against the learning outcomes associated with the first 18 months of the programme (the core element). This process will require the pharmacist to submit a portfolio of evidence (to meet a series of learning outcomes embracing technical, MI, clinical and patient service) detailing their validated experiential learning to date (this will typically involve evidence of the learning completed within their rotational experience as signed off by the appropriate tutor) as well as their academic credits (i.e. School of Pharmacy Certificate in Pharmacy Practice or one of the University of Brighton's modules in Applied Therapeutics). We encourage candidates to sign-off learning outcomes specified in the four curriculum guides as well as obtaining a generic sign-off from a senior colleague from each of the four areas (details and documents to help with this will be provided). Each candidate will be interviewed to confirm the source of the evidence.

2. Where the evidence presented is unequivocal the individual will be awarded academic credits, equivalent to a Postgraduate Certificate in General Pharmacy Practice. Where there is insufficient evidence there are a number of options. Individuals may be required to sit a range of assessments and/or provide further evidence to ensure that the learning outcomes have been met. This is a requirement of any academic institution offering credits for prior learning. Remedial support and preparation will be offered to individuals who fall into the later category.

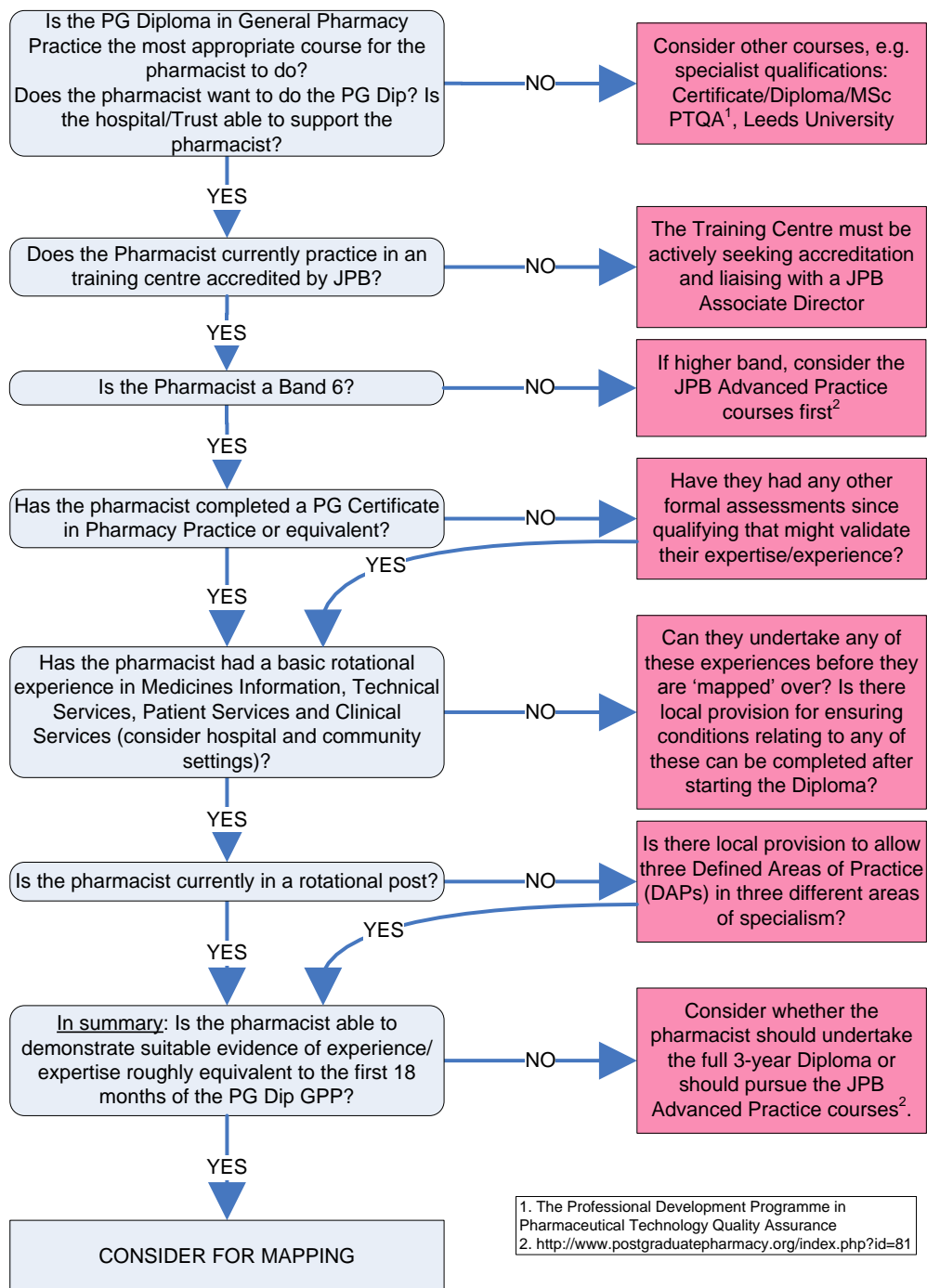
3. Pharmacists who meet the learning outcomes and are awarded academic credits will be eligible for entry into the final 18 months of the PG Diploma in GPP (i.e. the Defined Areas of Practice {DAP}). This can only occur at a Training Centre that have secured provisional accreditation for the learning outcomes associated with the DAP programme to be offered.

4. Pharmacists who meet the learning outcomes but who are not working in an accredited Training Centre will be provided with a transcript of the mapping process to provide evidence that they have met the outcomes associated with the first 18 months and detailing the allocated academic credits. These credits may then be used to enter the PG Dip GPP programme at a later date or another programme where the credits are seen as appropriate.
5. A flat fee of £350\* will be charged for candidates who wish to be considered in this way. This will cover the cost of the review process, any assessments which are subsequently required as well as the provision of remedial support to individuals. Payment of the fee does not guarantee the award of academic credits.
6. Individuals who wish to enter the final 18 months of the PG Dip GPP programme will be subject to three separate instalments of £225\* for each DAP. The total fee associated with the award of the PG Dip GPP will therefore be £1025\* (plus any fee paid for previous academic study).
7. Entry into any future Advanced Practice system (e.g. Masters programme) is likely to consider individuals on the basis of equivalent level of attainment and experience. This will ensure equitable access, recognising the contribution made by individuals who may not hold a postgraduate academic qualification but who have equivalent, demonstrable pharmaceutical experience.
8. More detail in relation to the contact person and the application process will be provided over the coming few months.

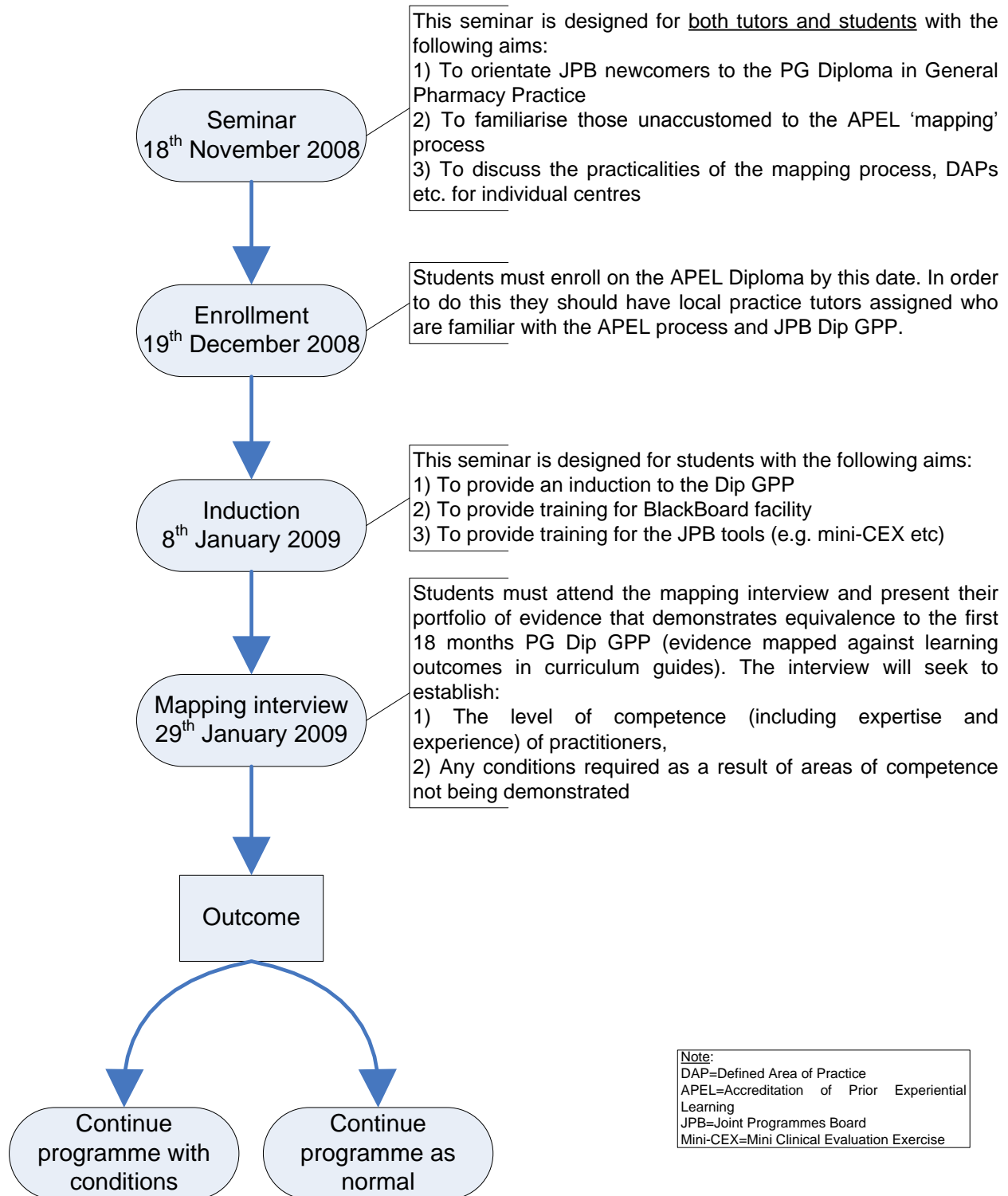
---

\* Fees subject to annual increases, usually between 3-5% – please contact us directly regarding current charges.

## 2 Pre-considerations for mapping onto the Post-graduate Diploma in General Pharmacy Practice



### 3 APEL mapping process, PG Dip GPP



## 4 FAQs:

### *What is 'mapping' about?*

After the PG Dip GPP was introduced, a number of practicing pharmacists expressed that they would have enrolled on the diploma had it been available when they began practice and would still benefit from completing the diploma. In this context 'mapping' refers to the process by which a pharmacist can capitalise on their expertise and previous experience to ensure that they can join the diploma at the 18 month point (halfway through). This also acknowledges that the evidence presented will mostly be retrospective and provides a legitimate process by which this evidence is validated. The terminology for this process is APEL (accreditation of prior experiential learning).

### *How do candidates 'map'?*

A candidate collects evidence, largely retrospectively, to form a portfolio of evidence that meets learning outcomes specified for the first 18 months of the PG Dip GPP. This is presented in an interview such that the candidate has an opportunity to discuss their experiences. The candidate is later informed what conditions, if any, need to be met in order to continue on the diploma. Candidates are enrolled onto the diploma while the mapping process is carried out.

### *Who is the contact?*

Dr Timothy Rennie ([timothy.rennie@pharmacy.ac.uk](mailto:timothy.rennie@pharmacy.ac.uk)) is the JPB Programme Director for these transitional arrangements.

### *How often can students enrol for the APEL 'mapping' PG Dip GPP?*

To date, under the interim arrangements, students have been able to enrol every six months – around December and June. Continuation of the 'mapping' process will depend on demand from NHS Trusts/hospitals and capacity within JPB to do this.

### *Can students start a DAP before enrolling?*

Please contact us directly about this. However, a number of students have previously started DAPs before enrolling on the diploma. The benefit of this is that it allows local flexibility around the DAP. However, please consider that the student will not benefit from learning sets before they are enrolled and will need to be suitably prepared, for example, with JPB tools to start the diploma.

### *What happens if a student fails the mapping process?*

A number of sessions are run to ensure that only suitable candidates are put forward for mapping. The outcome of the mapping process ensures that nobody fails but the conditions set to continue on the diploma may be considered too great to continue.

### *How much does the mapping diploma cost?*

For up-to-date information about this, please contact us directly. However, the fee for the mapping process is approximately £350 and the three DAPs are each charged at £225.

*If a student disengages from the diploma, will the sponsor have to meet the cost of the remaining diploma?*

The cost of the mapping diploma is now split between the mapping process and the three remaining DAPs. The sponsor is invoiced for each part of this separately. For example, if a student disengages from the diploma at the end of the first DAP their sponsor will be charged for the mapping process and the first DAP.

*Can students join other learning sets?*

As candidates on the mapping diploma register at different times to normal PG Dip GPP there is less opportunity for joining other learning sets. However, if candidates are keen then we would try to support this.

*How do students register for the mapping PG Dip GPP?*

Details are emailed out regarding the enrolment/registration process. Following the [pre-enrolment seminar](#) registration is normally open for a few weeks. However, enrolment is conducted in the usual way through the [JPB website](#), the only difference being that mapping students must select the box 'Interim entry applicant' on the form.

*Can candidates disengage from the diploma and DAP system and later re-engage?*

If a candidate disengages from the diploma they currently have an opportunity to re-engage but we will consider this on a case-by-case basis depending on circumstances.

## 5 Further information

JPB website:

[www.postgraduatepharmacy.org](http://www.postgraduatepharmacy.org)

APEL mapping (PG Dip GPP):

Tim Rennie, [timothy.rennie@pharmacy.ac.uk](mailto:timothy.rennie@pharmacy.ac.uk); 020 71600 533 (Thursdays & Fridays)

The Advanced Pharmacy Practice Programme:

Alison Innes, [Alison.innes@pharmacy.ac.uk](mailto:Alison.innes@pharmacy.ac.uk); 020 71600 539 (Mondays & Tuesdays)

General JPB enquiries:

[admin@jpbsoutheast.org](mailto:admin@jpbsoutheast.org), [Verona.zloh@pharmacy.ac.uk](mailto:Verona.zloh@pharmacy.ac.uk), 020 71600 531